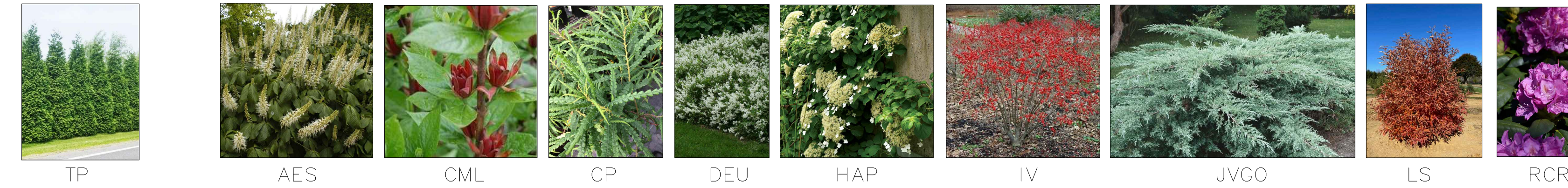


SIDE YARD MEADOW PLANT LIST

KEY	QUANTITY	BOTANICAL NAME	COMMON NAME	NATIVE	SIZE	COMMENTS
EVERGREENS						
TP	5	Thuja plicata 'Green Giant'	Green Giant Arborvitae	Y	10-12'	Symmetrical, full to ground
SHRUBS						
AES	1	Aesculus parviflora	Bottlebrush Buckeye	Y	7 gal	Full, symmetrical, well rooted
CML	3	Calycanthus floridus 'Michael Lindsey'	Michael Lindsey Sweetshrub	Y	7 gal	-
CP	7	Comptonia peregrina	Sweetfern	Y	2 gal	-
DEU	11	Deutzia gracilis 'Nikko'	Nikko Dwarf Deutzia	Y	2 gal	-
HAP	5	Hydrangea anomala petiolaris	Climbing Hydrangea	Y	2 gal	-
IV	1	Illex verticillata 'Red Sprite'	Red Sprite Winterberry Holly	Y	2 gal	-
JVGO	11	Juniperus virginiana 'Grey Owl'	Grey Owl Eastern Cedar	Y	3 gal	-
LS	5	Lindera glauca salicifolia	Asian Greybush Spicebush	Y	10 gal	-
RCR	5	Rhododendron catawbiense 'Roseum Elegans'	Roseum Elegans Rhododendron	Y	30-36"	-
PERENNIALS						
AGA	7	Agastache x 'Blue Fortune'	Blue Fortune Anise Hyssop	Y	1 gal	Vigorous, well rooted
AOS	33	Aster oblongifolius 'October Skies'	Aster October Skies	Y	1 gal	-
ARF	27	Aster oblongifolius 'Raydon's Favorite'	Aster Raydon's Favorite	Y	1 gal	-
AST	16	Aster macrophyllus 'Twilight'	Aster Twilight	Y	1 gal	-
DFM	50	Dryopteris felix mas	Robust Male Fern	Y	1 gal	-
EP	29	Echinacea pallida	Pale Purple Coneflower	Y	1 gal	-
EPM	3	Echinacea purpurea 'Magnus'	Magnus Purple Coneflower	Y	1 gal	-
ELH	0	Eupatorium hyssopifolium	Heavenly Leafed Thoroughwort	Y	1 gal	-
EUP	7	Eupatorium maculatum 'Gateway'	Gateway Joe Pye Weed	Y	1 gal	-
GM	56	Geranium maculatum 'Crane Dance'	Crane Dance Spotted Cranesbill	Y	1 gal	-
HFL	11	Helianthus salicifolia 'First Light'	First Light Swamp Sunflower	Y	1 gal	-
LIA	26	Liastris spicata 'Floristan Violet'	Floristan Violet Gayfeather	Y	1 gal	-
MB	48	Monarda bradburiana	Eastern Beebalm	Y	1 gal	-
MEU	17	Monarda punctata	Spotted Beebalm	Y	1 gal	-
PA	30	Polystichum acrostichoides	Christmas Fern	Y	1 gal	-
PYM	30	Pycnanthemum multicutum	Mountain Mint	Y	1 gal	-
RF	12	Rubia pinnatifida	Pink Coneflower	Y	1 gal	-
RFG	51	Rutbeckia fulgida 'Goldstrum'	Goldstrum Black Eye Susan	Y	1 gal	-
VER	40	Vernonia lettermannii 'Iron Butterfly'	Iron Butterfly Ironweed	Y	1 gal	-
VV	21	Veronicastrum virginicum	Cuiver's Root	Y	1 gal	-
GRASSES						
ABH	5	Andropogon gerardii 'Blackhawks'	Blackhawks Big Bluestem	Y	2 gal	Vigorous, well rooted
BOU	25	Buteloua gracilis 'Borde Ambition'	Borde Ambition Gamma Grass	Y	2 gal	-
CL	56	Chasmanthium latifolium	Northern Sea Oats	Y	1 gal	-
DGT	82	Deschampsia cespitosa 'Goldtau'	Goldtau Tufted Hair Grass	Y	1 gal	-
MOL	3	Molinia caerulea 'Skracrer'	Skracrer Purple Moor Grass	Y	1 gal	-
SPOT	40	Sporobolus heterolepis 'Tara'	Tara Prairie Dropseed	Y	1 gal	-
SS	65	Schizachyrium scoparium 'Standing Ovation'	Standing Ovation Little Bluestem	Y	1 gal	-

SIDE YARD MEADOW PLANT LIBRARY

EVERGREENS SHRUBS



PERENNIALS



GRASSES



STREET BUFFER PLANT LIST

KEY	QUANTITY	BOTANICAL NAME	COMMON NAME	NATIVE	SIZE	COMMENTS
EVERGREENS						
IOS	5	Illex opaca 'Satyr Hill'	Satyr Hill American Holly	Y	7'	Symmetrical, full to ground
SHRUBS						
FG	3	Fothergilla x intermedia 'Mount Airy'	Mount Airy Fothergilla	Y	10 gal	Full, symmetrical, well rooted
HA	5	Hydrangea arborescens 'Annabelle'	Annabelle Hydrangea	Y	5 gal	-
RCR	6	Rhododendron catawbiense 'Roseum Elegans'	Roseum Elegans Rhododendron	Y	30-36"	-
VP	3	Viburnum pragnense	Pragnense Viburnum	Y	15 gal	-
VR	3	Viburnum thymidophyllum	Leatherleaf Viburnum	Y	15 gal	-
PERENNIALS						
AES	23	Aster divaricatus 'Eastern Star'	Aster Eastern Star	Y	1 gal	Vigorous, well rooted
ARU	15	Aconitum x 'Charmilly Lace'	Charmilly Lace Dwarf Goatsbeard	Y	1 gal	-
DFM	75	Dryopteris felix mas	Robust Male Fern	Y	1 gal	-
DSB	25	Diervilla sessilifolia 'Butterfly'	Butterfly Bush Honeysuckle	Y	3 gal	-
EPR	42	Epimedium x rubrum	Rubrum Barrenwort	Y	1 gal	-
GMS	44	Geranium macrorrhizum 'Spessart'	Spessart Bigroot Cranesbill	Y	1 gal	-
HEI	11	Hebe x 'Ice N' Roses White'	Ice N' Roses White Lenten Rose	Y	1 gal	-
PA	46	Polystichum acrostichoides	Christmas Fern	Y	1 gal	-
PD	18	Phlox divaricata 'Blue Moon'	Blue Moon Woodland Phlox	Y	1 gal	-
PFV	13	Polygonatum falcatum 'Variegata'	Variegated Solomon's Seal	Y	1 gal	-
GRASSES						
CA	25	Carex albicans	White Tinged Sedge	Y	2 gal	Vigorous, well rooted
CL	15	Chasmanthium latifolium	Northern Sea Oats	Y	2 gal	-
HM	100	Hakonechloa macra	Japanese Forest Grass	Y	1 gal	-
SPOT	50	Sporobolus heterolepis 'Tara'	Tara Prairie Dropseed	Y	1 gal	-

STREET BUFFER PLANT LIBRARY

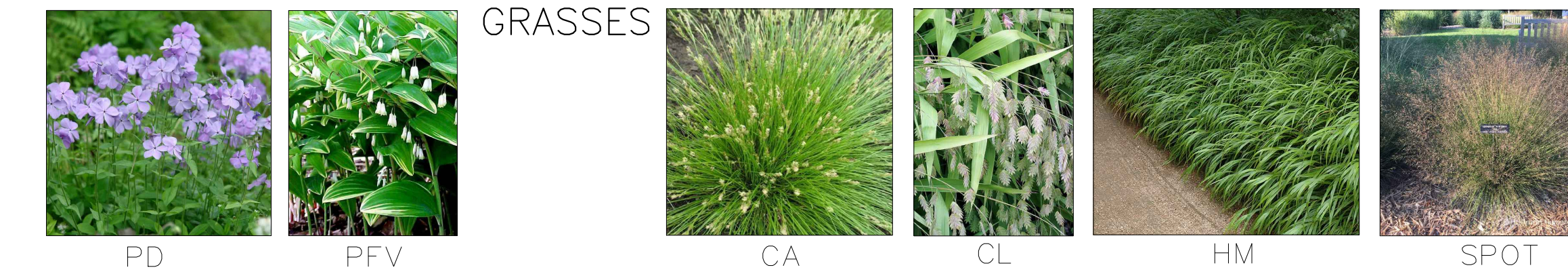
EVERGREENS SHRUBS



PERENNIALS



GRASSES



RIDGE PLANT LIST

KEY	QUANTITY	BOTANICAL NAME	COMMON NAME	NATIVE	SIZE	COMMENTS
SHRUBS						
BDR	1	Buxus 'Dee Runk'	Dee Runk Boxwood	Y	4'	Full, symmetrical, well rooted
IBM	3	Illex x meservae 'Blue Maid'	Blue Maid Holly	Y	4' x 4'	-
SYP	3	Syringa patula 'Miss Kim'	Miss Kim Lilac	Y	7 gal	-
PERENNIALS						
ABI	15	Amsonia x 'Blue Ice'	Blue Ice Amsonia	Y	1 gal	Vigorous, well rooted
AES	11	Aster divaricatus 'Eastern Star'	Aster Eastern Star	Y	1 gal	-
ALM	13	Allium 'Millenium'	Millenium Ornamental Onion	Y	1 gal	-
AMSC	17	Amsonia tabernaemontana 'Storm Cloud'	Storm Cloud Amsonia	Y	1 gal	-
AOS	16	Aster oblongifolius 'October Skies'	Aster October Skies	Y	1 gal	-
ASC	7	Anemone x 'September Charm'	September Charm Japanese Anemone	Y	1 gal	-
ASF	30	Aster ericoides 'Snow Flurry'	Aster Snow Flurry	Y	1 gal	-
EY	15	Eryngium yuccifolium	Rattlesnake Master	Y	1 gal	-
GAZ	25	Geranium 'Aure Rush'	Azure Rush Cranesbill	Y	1 gal	-
HAB	39	Heuchera 'Autumn Bride'	Autumn Bride Heuchera	Y	1 gal	-
HEB	13	Hebe x 'Brandywine Series'	Brandywine Series Lenten Rose	Y	1 gal	-
IES	8	Iris 'Everything Plus'	Everything Plus Bearded Iris	Y	1 gal	-
II	11	Iris 'Immortality'	Immortality Iris	Y	1 gal	-
LAV	15	Lavandula x intermedia 'Phenomenal'	Phenomenal Lavender	Y	1 gal	-
LF	15	Laurentia fluvialis	Blue Star Creeper	Y	1 pt / flat	-
LIM	37	Liastris microcephala	Dwarf Blazing Star	Y	1 gal	-
MRW	17	Monarda 'Raspberry Wine'	Raspberry Wine Beebalm	Y	1 gal	-
PDT	32	Penstemon digitalis 'Dark Towers'	Dark Towers Beardtongue	Y	1 gal	-
PRU	15	Prunella vulgaris 'Magdalena'	Magdalena Self Heal	Y	1 gal	-
PSU	27	Phlox subulata 'Emerald Blue'	Emerald Blue Mountain Phlox	Y	1 gal	-
PYM	15	Pycnanthemum nudicum	Mountain Mint	Y	1 gal	-
SK	15	Sedum kamtschaticum	Yellow flowering Stonecrop	Y	1 gal	-
SNC	15	Silphium laciniatum 'Caradonna'	Caradonna Sage	Y	1 gal	-
VER	45	Vernonia lettermannii 'Iron Butterfly'	Iron Butterfly Narrowleaf Ironweed	Y	1 gal	-
GRASSES						
CB	9	Calamagrostis brachytricha	Korean Feather Reed Grass	Y	2 gal	Vigorous, well rooted
MOL	5	Molinia caerulea 'Skracrer'	Skracrer Purple Moor Grass	Y	1 gal	-
SPOT	26	Sporobolus heterolepis 'Tara'	Tara Prairie Dropseed	Y	1 gal	-
SS	5	Schizachyrium scoparium 'Standing Ovation'	Standing Ovation Little Bluestem	Y	1 gal	-

RIDGE PLANT LIBRARY

SHRUBS



PERENNIALS



GRASSES



REAR SLOPE PLANT LIST

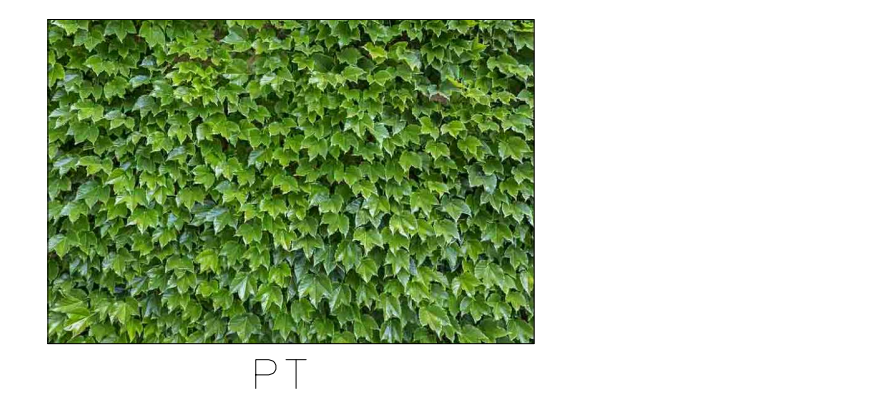
KEY	QUANTITY	BOTANICAL NAME	COMMON NAME	NATIVE	SIZE	COMMENTS
EVERGREENS						
CJ	3	Cryptomeria japonica 'Yoshino'	Yoshino Japanese Cryptomeria	Y	10-12'	Symmetrical, full to ground
PAC	1	Picea abies 'Cupressina'	Cupressina Spruce	Y	8-10'	-
SHRUBS						
ARO	150	Aronia melanocarpa 'Ground Hug'	Ground Hug Chokeberry	Y	3 gal	Full, symmetrical, well rooted
HQ	9	Hydrangea quercifolia 'Snow Queen'	Snow Queen Oakleaf Hydrangea	Y	10 gal	-
HYB	27	Hydrangea macrophylla 'Bluebird'	Bluebird Lacecap Hydrangea	Y	5 gal	-
IBM	3	Illex x meservae 'Blue Princess'	Blue Princess Holly	Y	54" hvy	-
IT	46	Ita virginica 'Merlot'	Merlot Virginia Sweetspire	Y	3 gal	-
JN	11	Jasminum nudiflorum	Winter Jasmine	Y	3 gal	-
RUB	100	Rubus calaycinoides	Creeping Raspberry	Y	1 gal	-
VINES						
PT	10	Parthenocissus tricuspidata	Boston Ivy	Y	2 gal	Vigorous, well rooted
PERENNIALS						
ALC	11	Aster cordifolius 'Little Carlow'	Little Carlow Aster	Y	1 gal	Vigorous, well rooted
AMS	200	Amsonia hubrichtii	Threadleaf Amsonia	Y	1 gal	-
AOS	19	Aster oblongifolius 'October Skies'	Aster October Skies	Y	1 gal	-
ASC	15	Amsonia tabernaemontana 'Storm Cloud'	Storm Cloud Amsonia	Y	1 gal	-
AWC	30	Allium 'Windy City'	Windy City Ornamental Onion	Y	1 gal	-
BAP	12	Baptisia x Sparkling Sapphires	Sparkling Sapphires Blue False Indigo	Y	1 gal	-
BCM	33	Baptisia 'Decadence Vanilla Cream'	Decadence Vanilla Cream False Indigo	Y	1 gal	-
EP	15	Echinacea purpurea 'Magnus'	Magnus Purple Coneflower	Y	1 gal	-
EUP	7	Eupatorium maculatum 'Gateway'	Gateway Joe Pye Weed	Y	1 gal	-
PA	100	Polystichum acrostichoides	Christmas Fern	Y	1 gal	-
PWF	30	Pycnanthemum flexuosum	Appalachian Mountain Mint	Y	1 gal	-
SRF	51	Solidago rugosa 'Firework'	Fireworks Rough Stemmed Goldenrod	Y	1 gal	-
GRASSES						
ABH	21	Andropogon gerardii 'Blackhawks'	Blackhawks Big Bluestem	Y	2 gal	Vigorous, well rooted
HM	80	Hakonechloa macra	Japanese Forest Grass	Y	1 gal	-
PNW	3	Panicum virgatum 'North Wind'	North Wind Switch Grass	Y	2 gal	-
SPO	50	Sporobolus heterolepis	Prairie Dropseed	Y	1 gal	-
SS	15	Schizachyrium scoparium 'The Blues'	The Blues Little Bluestem	Y	1 gal	-

REAR SLOPE PLANT LIBRARY

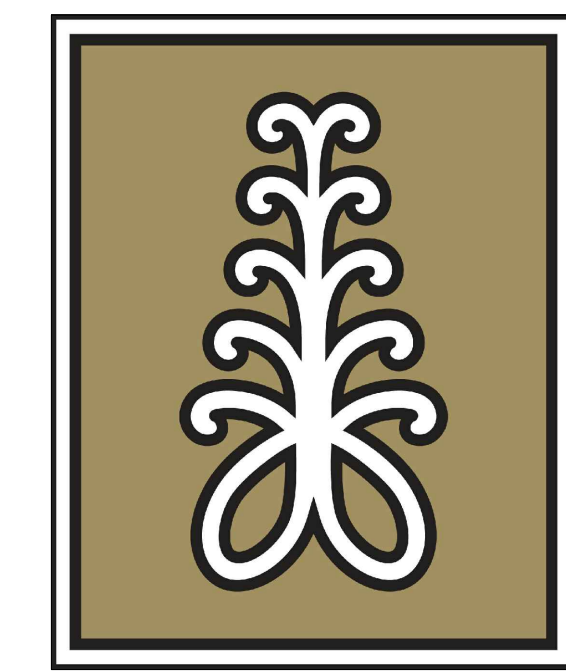
EVERGREENS SHRUBS



VINES



PERENNIALS



Andrea Buckingham
 Licensed Landscape Architect
 NJ LIC# 21AS000649
 NY LIC# 002766-1

87 North Pocono Road
 Mountain Lakes, NJ 07046
 Tel: 973-983-0616

Email: abuckinghamllc@gmail.com

**RIFKIN
 RESIDENCE**

97 WEST LAKE ROAD
 TUXEDO PARK, NY 10987

**LANDSCAPE
 PLAN**

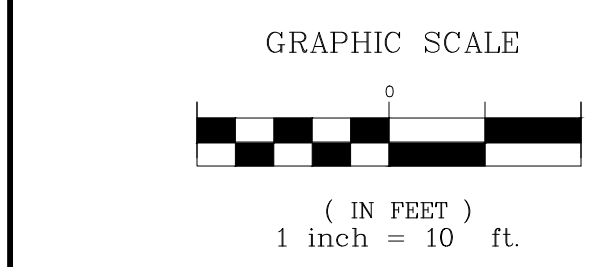
Date 3/17/2023

Revisions 4/28/2023

5/12/2023

Drawn by APB

Scale GRAPHIC SCALE



North

SHEET:
L-3